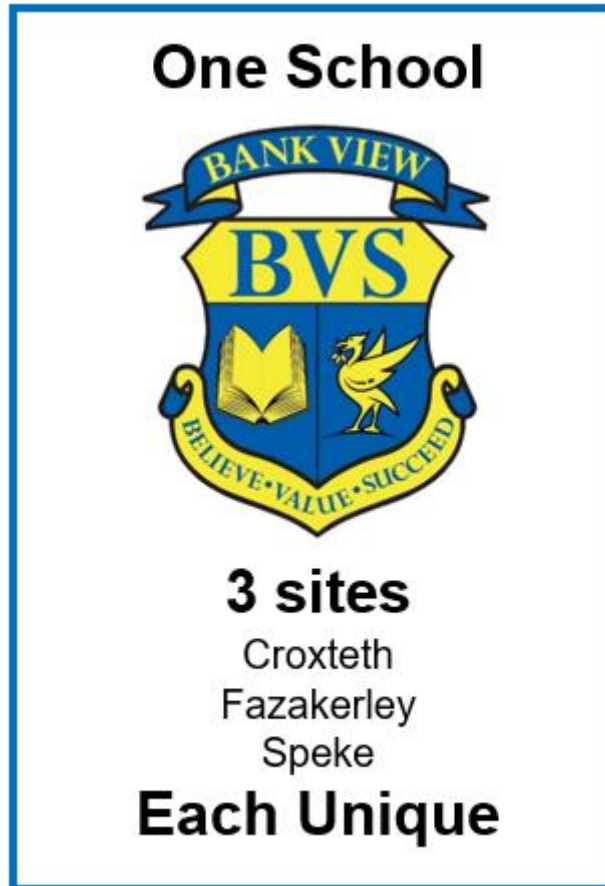


Together we **B**elieve we can learn
Value each other and
work to **S**ucceed.



SEND Information Report 2025 -2026

Contents

Organisation	4
Curriculum	5
Ensuring needs are met	5
Available support	6
Form Tutor	7
Management Structure and responsibilities	9
Additional staff providing interventions:	10
Consulting with young people and their parents	10
Staff training and development	11
Whole staff	11
School partnerships and transitions	12
Accessibility	13
Local offer	13

Overview

Bank View is an outstanding special school, based over three sites in Liverpool, for learners with complex learning difficulties.

Bank View cater for children from 5 to 19.

BankView@Croxteth – 24 places. Years 1 to 5.

Bank View Speke – 220 places. Years 7, 8 and 9

Bank View Fazakerley – 252 places. Years 4 to 14.


Across the three sites, we currently have places for 515 learners.

All the learners have an EHC plan. Our learners have complex needs, which would be included in the following headings:

- Communication and interaction.
- Cognition and learning.
- Social, mental and emotional health.
- Sensory and/or physical

Learners are allocated places in Bank View School by Liverpool Local Authority.

School values

<p>One School</p>  <p>3 sites Croxteth Fazakerley Speke</p> <p>Each Unique</p>	<p>Leadership</p> <p>There is shared leadership with all working together to drive school development</p>	<p>High Expectations</p> <p>Our offer is tailored to meet the uniqueness of each learner and prepare them for their next step in life</p>
<p>Positive mindset</p> <p>I do, we do, you do</p>	<p>Inclusive environment</p> <p>Diversity is valued and is the one true thing we have in common</p>	<p>Teamwork</p> <p>We work together tirelessly to ensure the best possible outcomes for our learners</p>

Organisation

Primary Department

Bank View Primary department is composed of 4 classes. Two are based at Croxteth Primary School and two at the Fazakerley site.

Class sizes are usually no more than 14 with a teacher and two support assistants. The classes all have their own outdoor space. The outdoor spaces have been enhanced as part of the OPAL project.

Secondary Department

In the secondary department, learners follow a secondary model timetable with lessons being taught mainly by subject specialists. The form tutors oversee the pastoral needs of the learners, and the subject teachers the academic needs.

In September 2023, we opened our third site based in Speke, which has places for years 7, 8, 9 and 5 Base classes.

6th form

The 6th form is based in Fazakerley on the 1st Floor, places are offered for 1, 2 or 3 years depending on the needs of the learner identified at the annual review. The 6th form is designed to support our more socially vulnerable learners who may need a longer transition to college/employment.

The 6th form curriculum builds the learner's confidence, self-esteem, independence and employability skills. The 6th form also allows our learners to complete a supported internship programme.

Base

For learners requiring additional support academically and/or socially in the secondary department, we have eight base classes which follow a primary model of teaching.

A place in the base provision is offered in consultation with staff and parents.

The Wellbeing Hub

There are Wellbeing Hubs on the Fazakerley and Speke sites which provide high-quality intervention and support based on individual curriculum or pastoral needs as identified by learners, staff or parents/carers. These bespoke outcome-based interventions are delivered via 1-1 and group work, with the sole purpose of cultivating resilient, independent young people.

The mentors from both Hubs offer support to the Croxteth site.

Curriculum

Learners are offered a broad, balanced, challenging and well-sequenced curriculum that offers a personalised pathway through our school. Learners can achieve externally recognised accreditation. We offer therapeutic support to those learners who require it.

Underpinning the whole curriculum are opportunities for personal and social development and support for our learners to 'learn how to learn' and to be able to self-regulate/ manage their emotions.

The majority of learners can access the curriculum with the support of high-quality teaching and classroom support. A whole range of strategies are used to overcome barriers to learning.

As learners move through the school, we offer a range of activities through our curriculum, including our enrichment programme, to provide learners with cultural capital and prepare them for the next step of their lives. For example, college placements, work experience and a life skills curriculum.

More information about the curriculum is included on the Curriculum and subject tabs on the website.

[Curriculum Overview 2025 - Bank View School](#)

Ensuring needs are met

All our learners access an inclusive, high-quality offer, which results in the vast majority of them achieving the outcomes in their EHC plan.

Some learners may need additional support to meet these outcomes in one or more area of their EHCP. This is Wave B and C support and will be detailed in the Wave B or C personalised support plan.



Learners are also assessed on entry and a standardised score in reading, spelling, comprehension and maths are produced. This is then completed annually.

Bank View assessment within the classroom is used to check understanding and inform teaching, it helps learners embed and use their knowledge. The Teaching, learning and assessment

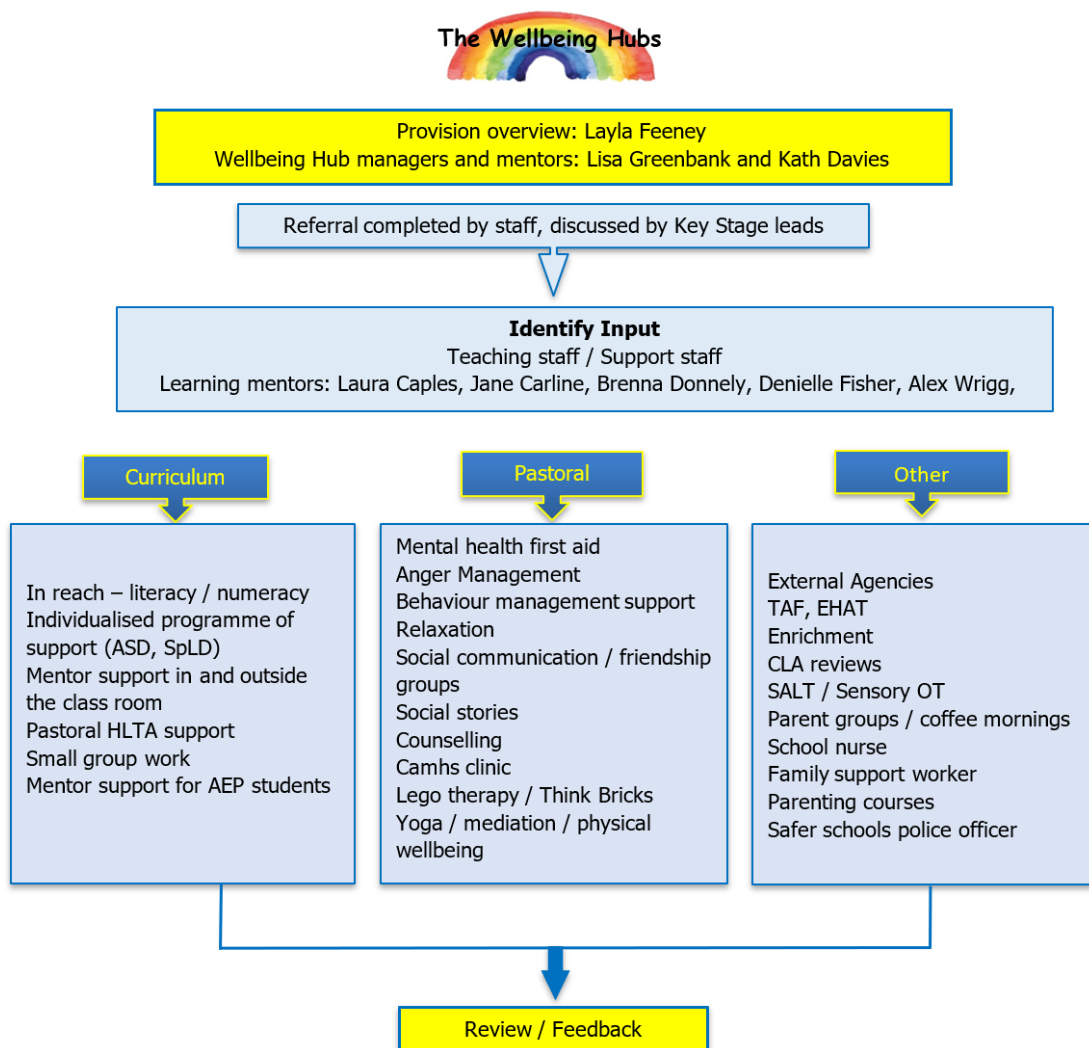
Available support

Support available in Wave B and C may be academic or therapeutic.

It can take place within the classroom, additional learning spaces or in the Wellbeing Hub.

- Support from the Hub – see chart below
- Exploration of alternative provision as part of the personalised pathway
- Sensory support / breaks
- Teaching groupings
- Input from external services

Wellbeing Hub



Contacts

Form Tutor

The first point of contact is the form tutor

Class	Teacher		
BankView@Croxteth			
Pearl	Miss Murphy		
Jasper	Mrs Hunt	Class	Teacher
Bank View Fazakerley		Bank View Speke	
Emerald	Miss Van Der Spuy	Ruby	Mrs Ashman
Turquoise	Miss McVey	Peridot	Mrs Metcalf
Quartz	Mr Swift	Amethyst	Miss Daye
Jade	Mrs O'Reilly	Diamond	Ms Lewis
Topaz	Mrs Wells (Roberts)	The Forge	Mr Laird
Sapphire	Miss Hitchmough	7SA	Miss Gash
6R	Miss Rogers	7SB	Miss Lalley
6S	Miss Southern / Mr Crook	7SC	Miss Radcliffe
6B	Mrs Barker	7SD	Miss Owen
7a	Mrs Cartwright	7SE	Mr McCormick
7b	Ms Loughlin	8SA	Miss Jooste
8a	Miss Wood	8SB	Miss Harding
8b	Mrs Mullholland	8SC	Ms Newall
9a	Mrs Nurse & Mrs Papa	8SD	Mrs Bharadwaj
9b	Miss McKenna	8SE	Miss Marti
10a	Mrs Pappa / Mrs Nurse	9SA	Miss Majury
10b	Mr McGrath	9SB	Miss Hide
11a	Mrs McDougall	9SC	Miss Richards
11b	Mrs Gilson		
11c	Mr Doyle		

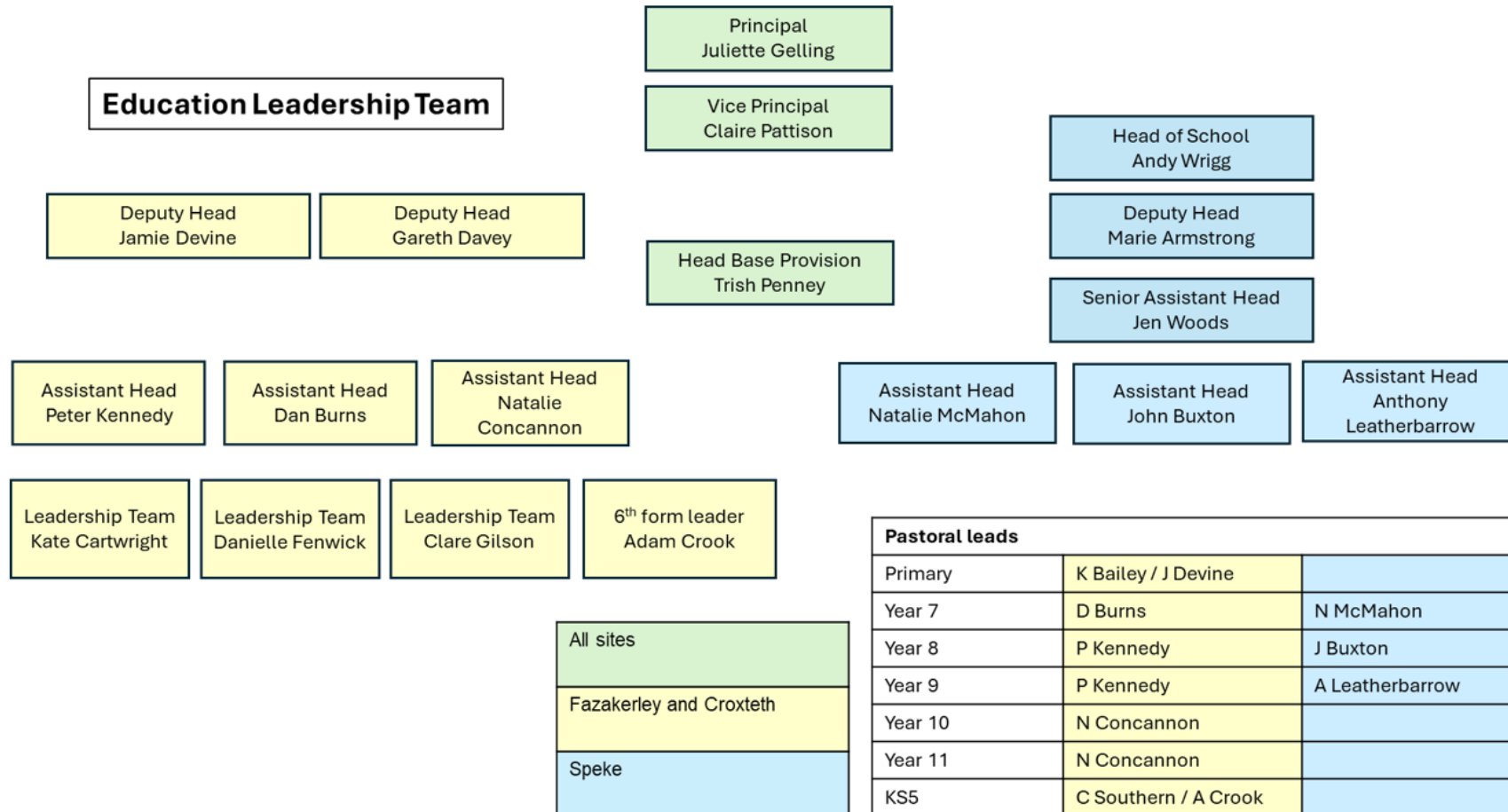
Together we **B**elieve we can learn
Value each other and
work to **S**ucceed.

All class groups have at least one support assistant assigned to them for additional help.

There is an HLTA assigned to each key stage to provide pastoral support and support with school attendance.

Management Structure and Responsibilities

The management structure is shown below with areas of responsibility outlined.



Additional staff providing interventions:

Careers advice	Neil Alecock
1:1 literacy support	Sonia Johnson / Grace Muldoon / Emma Wilsher
1:1 numeracy support	Dennielle Fisher
Music	Karl Webb / Jonathan Raisin
Counsellor	Nichola Doyle
Sensory Support	Emma Johnson / Joe Spellman
Sensory OT	Aoife O'Sullivan / Francesca Fletcher
Speech and language	Alix Connor / Francesca Fletcher
Educational Psychologist	We buy into the Liverpool EP service Hannah Nicholls is currently working with school

They can be contacted via the school office

Admin /Site team

Helen Evans	Director of People & Organisational Management
Nicole Pender	HR Assistant
Parv Panesar	Finance & Operations Manager
Lisa Dutton	School Business Manager
Michelle Jones	Exam & EHCP Co-ordinator
Lisa Smallshaw	Finance & Office Administrator
Cheryl Devine	Office Administration Assistant
Sue Smith	Office Administration Assistant
Sarah Green	Office Administration Assistant
Sarah Metcalf	Office Administration Assistant
Paul Raynard	Caretaker
Jason Emery	Caretaker
Steven Williams	ICT & Network Manager
Tom Pierce	Senior ICT Technician

Consulting with young people and their parents

Bank View consults with parents through parent consultation meetings, annual reviews, parents' evenings, parent questionnaire, Seesaw, Parent View, our school app and website.

Consultation with learners takes place through their form tutors, school council, schools' parliament, annual review, parents' evenings and the Wellbeing Hub.

Staff training and development

Whole staff annual training on:

- LEAFe
- Safeguarding
- ASD
- Sensory needs
- SALT
- Meeting medical needs – asthma and epilepsy
- ADHD
- Mental health
- Restorative practice
- Behaviour as a form of communication
- Attachment and trauma-informed practice

Staff training is linked to the school improvement plan and training on an individual level is recorded in the Curriculum report to Governors.

Priorities for this year are embedding our pedagogical framework, the behaviour curriculum, Philosophy for children and development of the Speke and Base provision.

Bank View Fazakerley and Croxteth sites hold the NAS accreditation mark, which was renewed in June 2025. The Speke site has begun the process with an accreditation visit scheduled for June 2026.

We achieved the Rainbow Flag Award in October 2022.

In June 2024, we were successful in gaining the Parent Partnership Award.

We also hold the Best Practice in Teaching Assistants and Health and Wellbeing award; this was renewed in October 2023.

We hold the UNICEF Silver Rights Respecting Schools award.

We hold a platinum OPAL award for our primary department and are expanding the programme across the school.

School partnerships and transitions

Bank View supports learners to manage both micro transitions e.g. lesson to lesson/year to year and macro transitions – starting Bank View and also transitioning to college.

Parents and learners are welcome to visit the school prior to accepting a place and also once a place has been identified. We also visit learners in their existing settings and talk to staff there.

The careers advisor and school staff support learners in college visits and interviews. All year 11 learners visit local colleges on to familiarise themselves with the college setting and gain an understanding of potential college courses.

We run a supported internship programme.

The majority of our learners come to school via local authority transport and we work with them to ensure this is a positive start to the learners' day, a number of learners have become independent travellers with the support of the independent travel team. Bank View also runs an independent programme in the 6th Form.

We also work with school health, home school support and the educational psychology service.

Areas for development

These are detailed in the school development plan, but focus on the following areas:

- Metacognition
- Attendance
- Our therapeutic offer
- Developing and growing our Speke and Base provision
- OPAL for all phases

Complaints

Complaints can normally be dealt with informally with the teacher concerned or the Principal or the Head of School. If, following this, parents/carers are still dissatisfied, then there are more formal procedures. This ensures that all complaints receive fair, full and speedy consideration. However, the need for these procedures is very few. Our Complaints Policy can be viewed on the school website or is available on request from the school office

Accessibility

All learners have access to low-arousal environments and sensory rooms.

Fazakerley:

Bank View moved into a new building in September 2015. It is fully accessible. The school was designed to meet the needs of learners with special educational needs and particularly those with ASD. The school was designed with careful consideration of the auditory and visual environments.

Croxteth:

We have two primary classes based at Croxteth Primary. They have access to a carefully designed outdoor space (we are part of the Opal project) and a sensory room.

Speke:

A former school site has been adapted to meet our learners' needs. There are sensory rooms and additional learning spaces available for all class groups and a purpose-built hygiene suite.

The school accessibility plan is available from the school either as an electronic copy or a paper copy on request.

Local offer

Our contribution to the local offer is:

[Liverpool Family Information & SEND Directory | Bank View School](#)

Liverpool authority's local offer is published here:

[SEND local offer - Liverpool City Council](#)

Sefton authority's local offer is published here:

[Schools and Learning \(sefton.gov.uk\)](#)

Knowsley authority's local offer is published here:

[Knowsley Local Offer \(SEND\) | Knowsley Council](#)